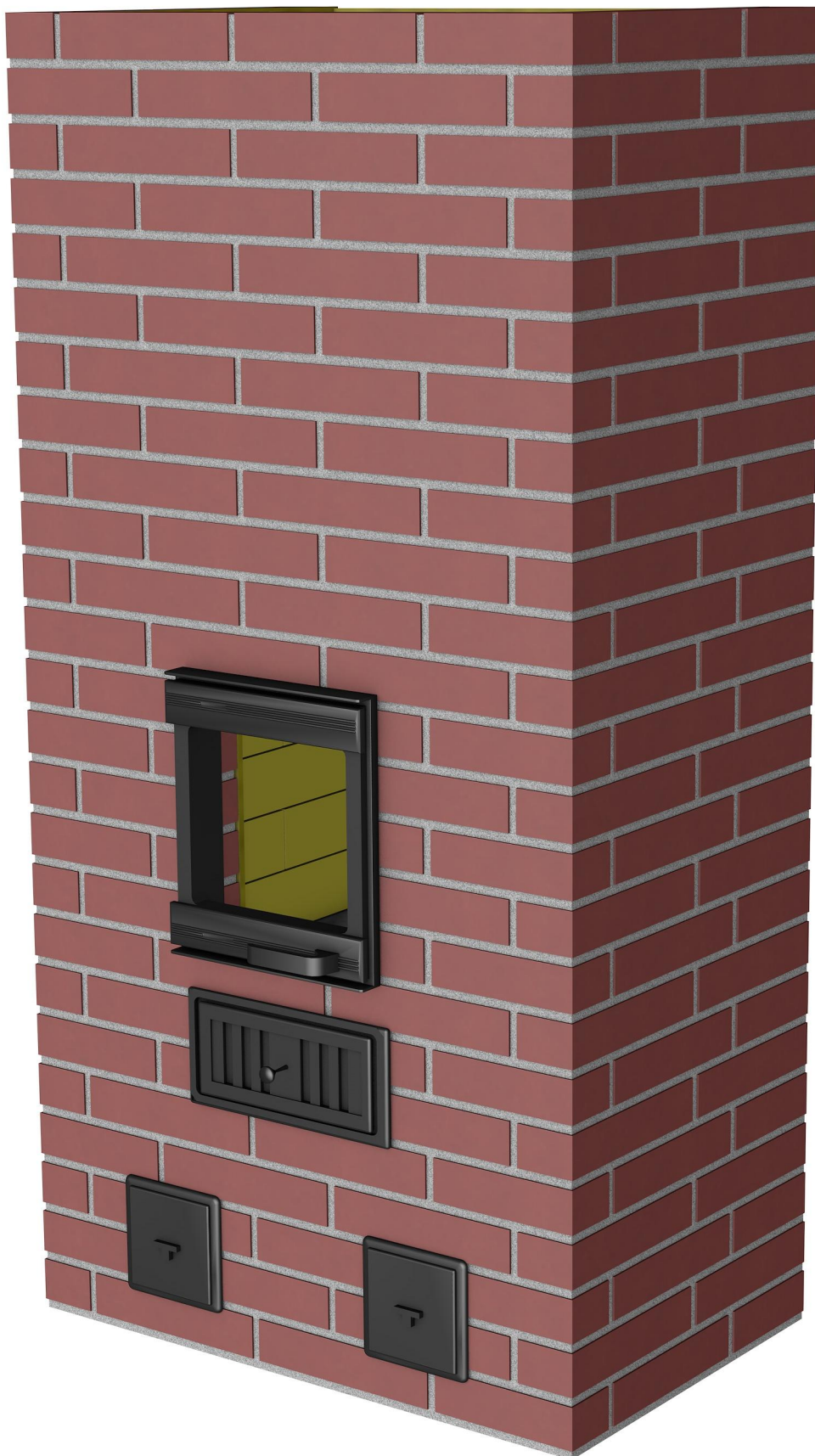
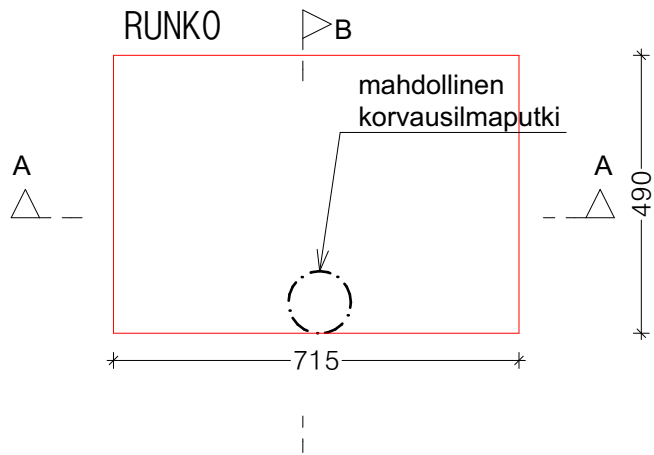


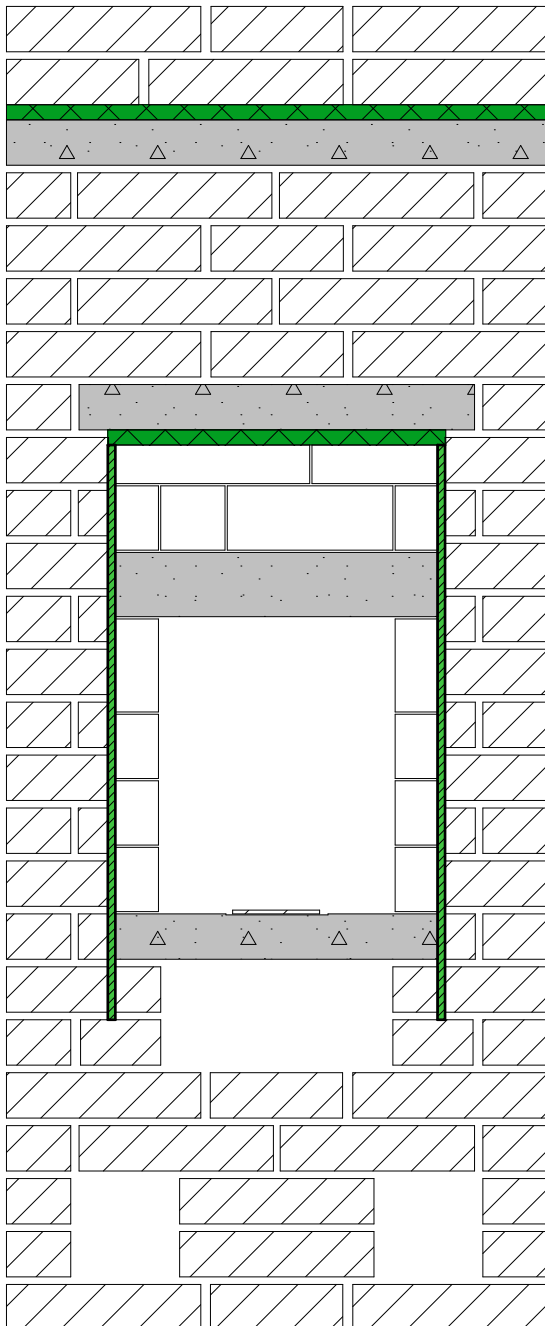
VARAAVA TAKKA 900



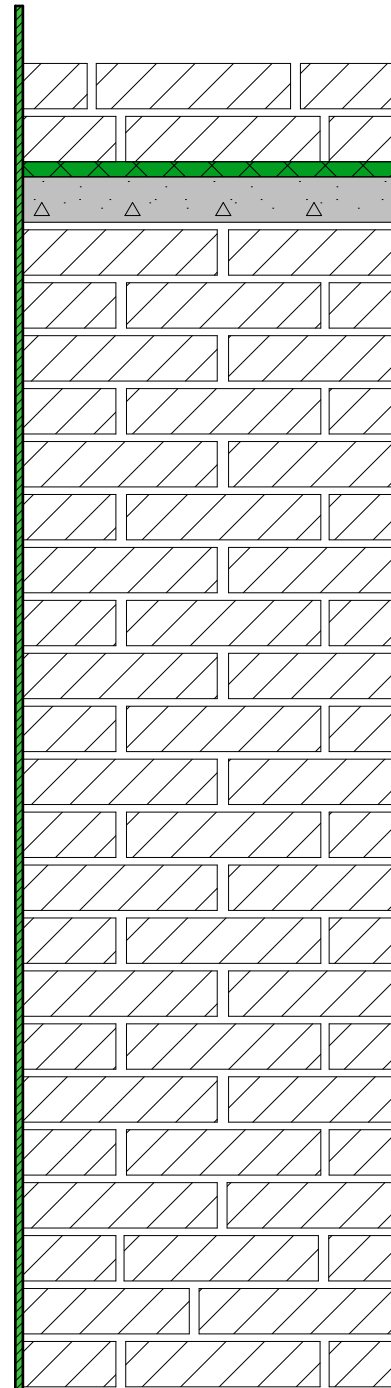
VARAAVA TAKKA 900



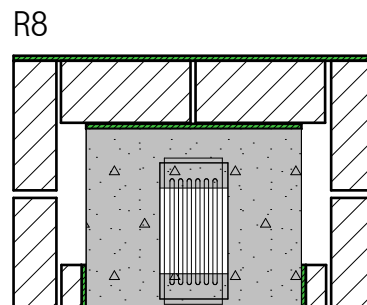
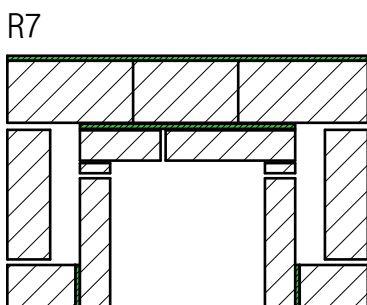
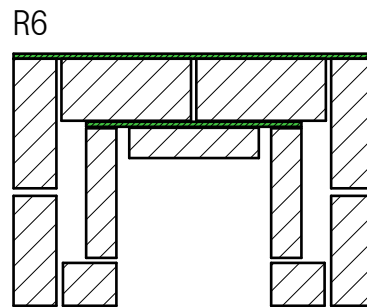
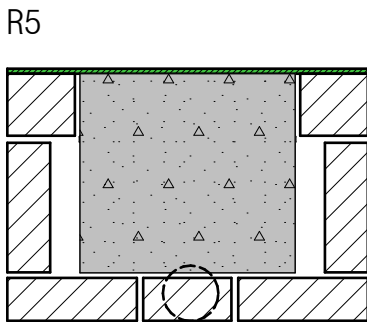
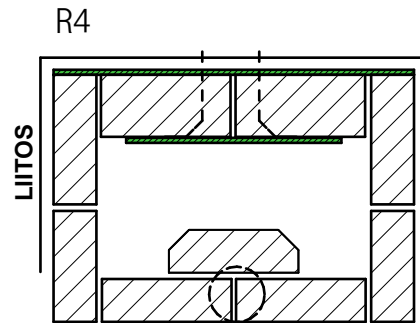
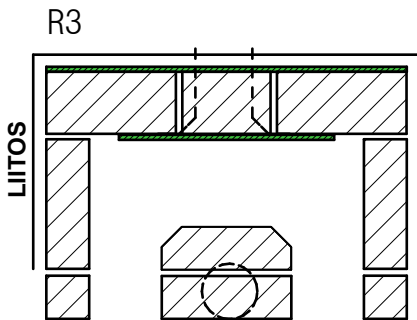
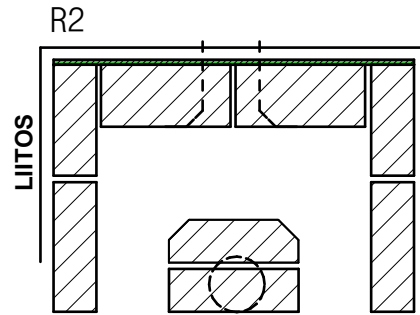
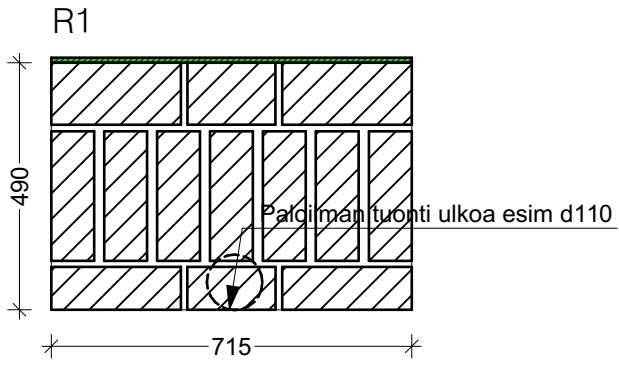
RUNKO EDESTÄ



RUNKO SIVULTA

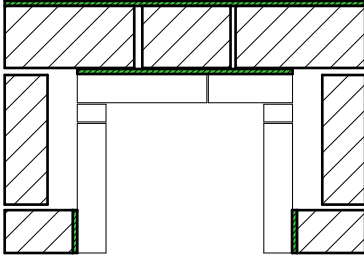


VARAAVA TAKKA 900

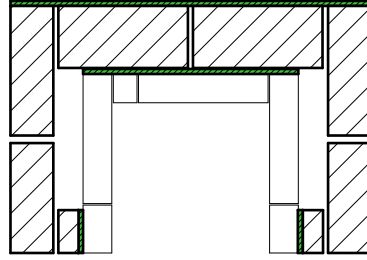


VARAAVA TAKKA 900

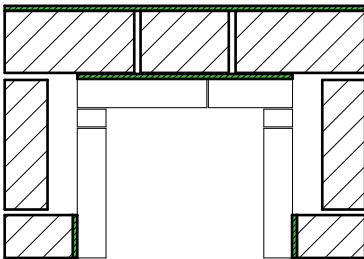
R 9



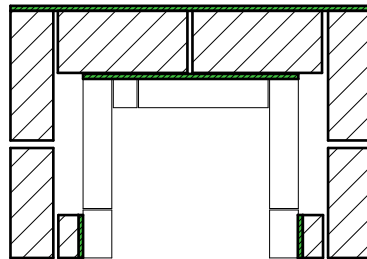
R 10



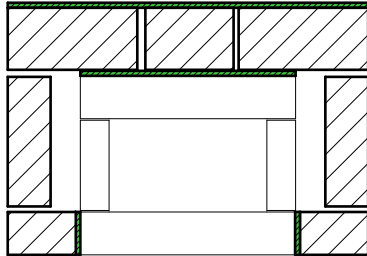
R 11



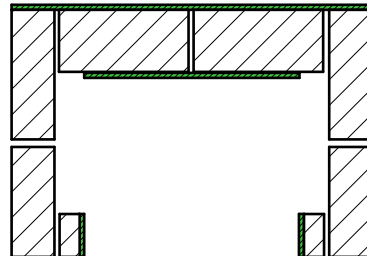
R 12



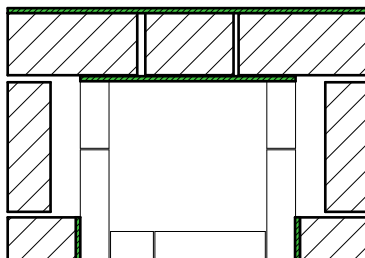
R 13



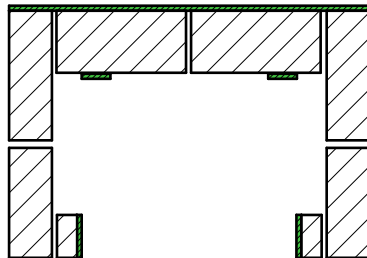
R 14



R 15

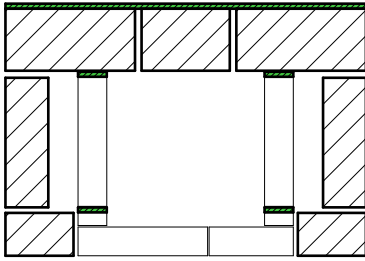


R16

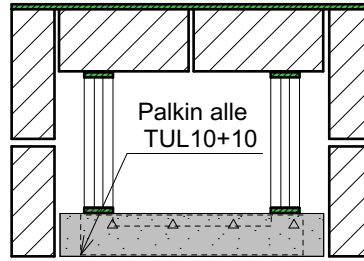


VARAAVA TAKKA 900

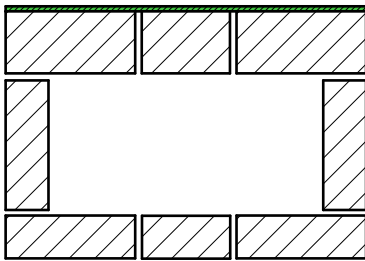
R 17



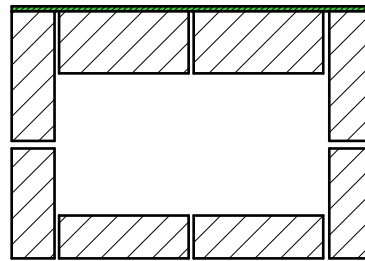
R 18



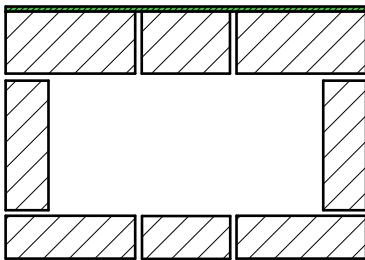
R 19



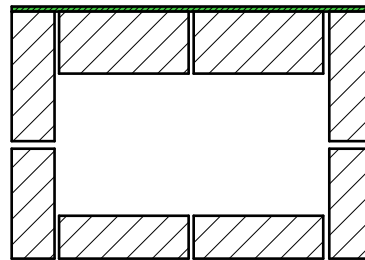
R 20



R 21

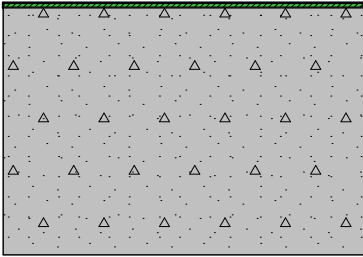


R 22

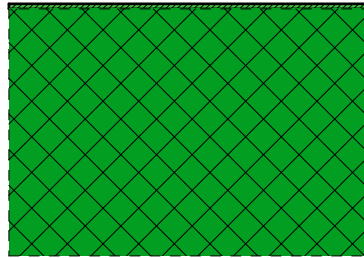


VARAAVA TAKKA 900

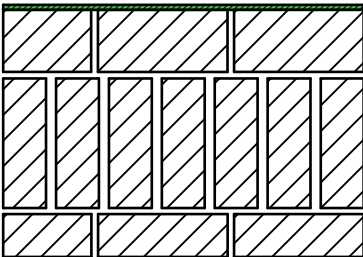
R23



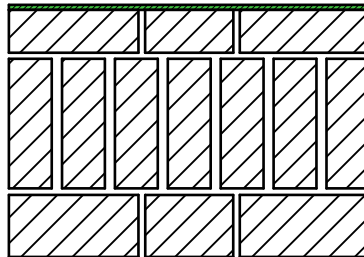
R24



R25



R26

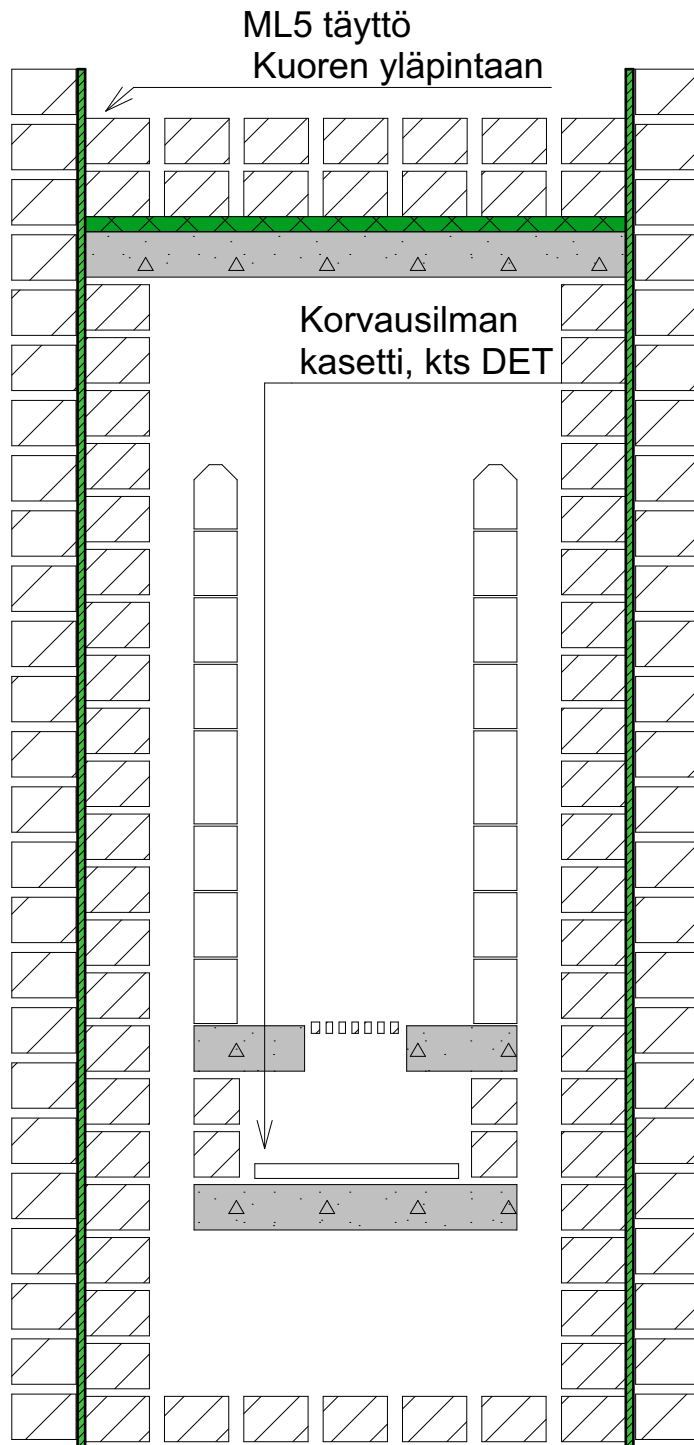


VARAAVA TAKKA 900

A

Leikkaus

1:10

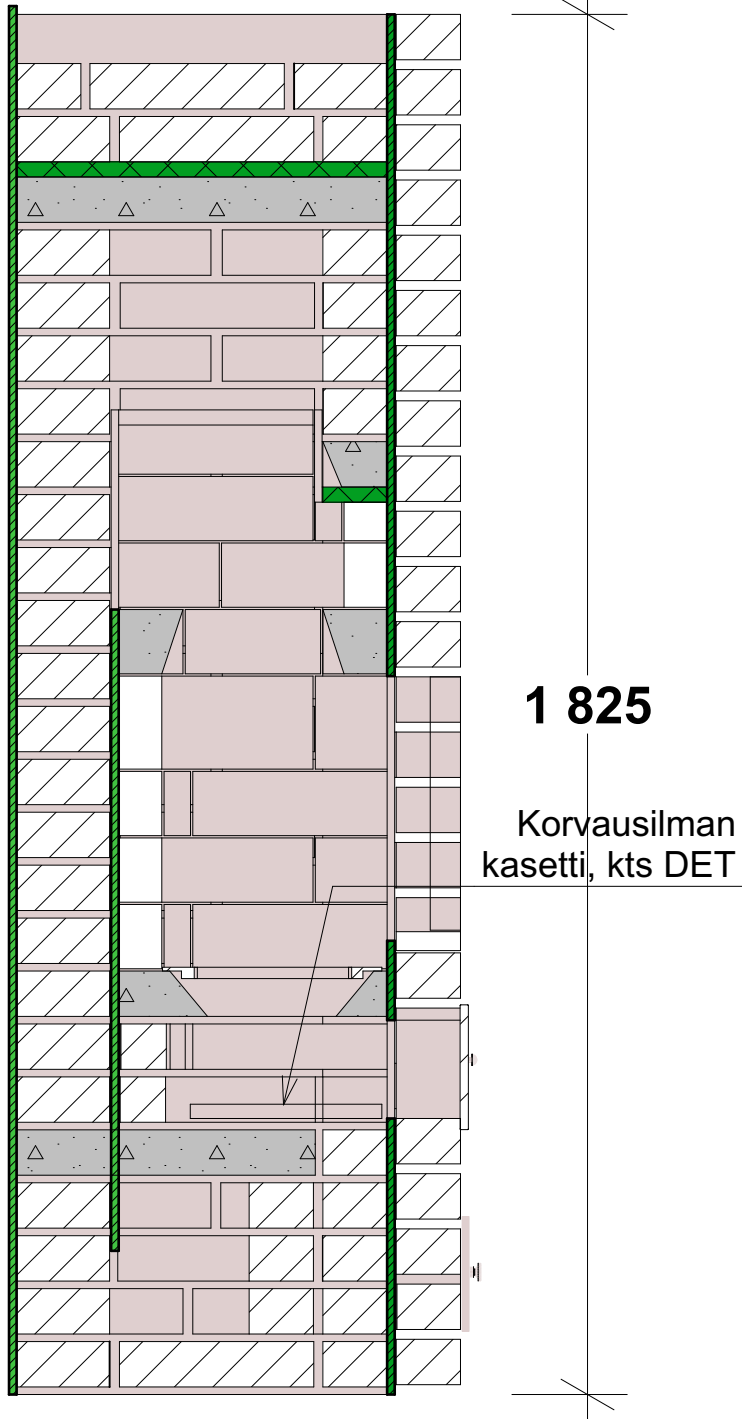


VARAAVA TAKKA 900

B

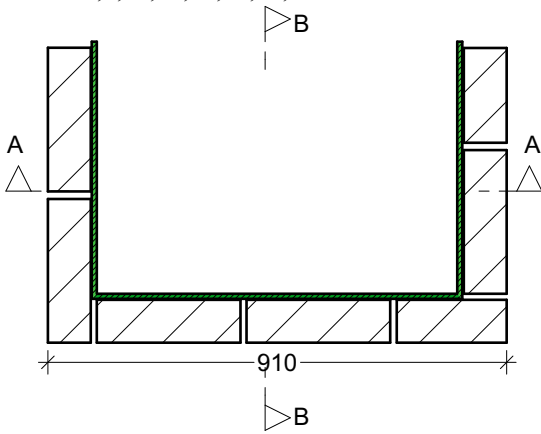
Leikkaus

1:10

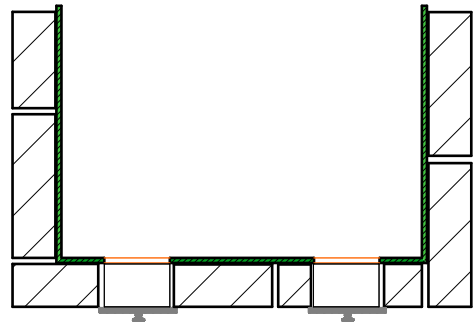


VARAAVA TAKKA 900

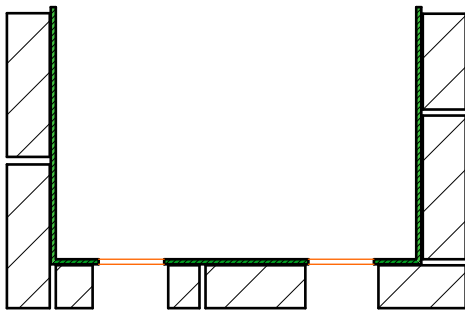
K 1,5,15,17,19,21,23,25



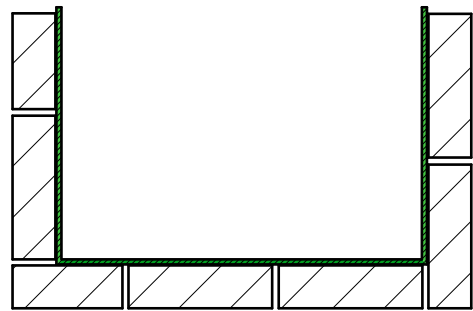
K 2



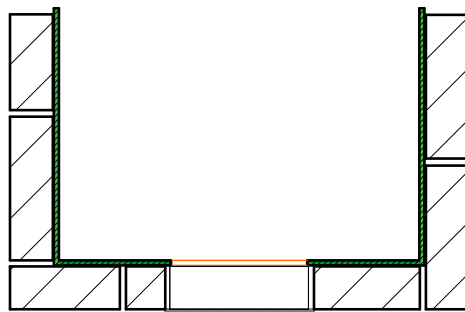
K 3



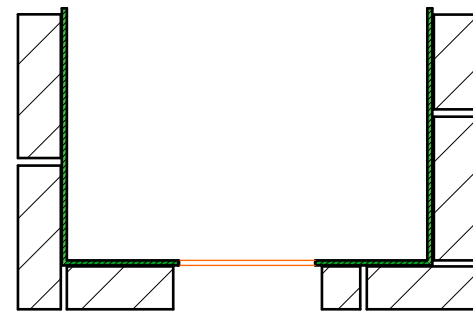
K 4,8,14,16,18,20,22,24



K 6

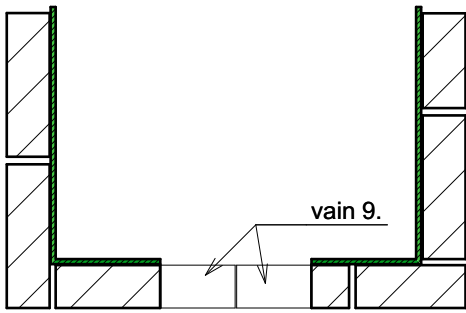


K 7

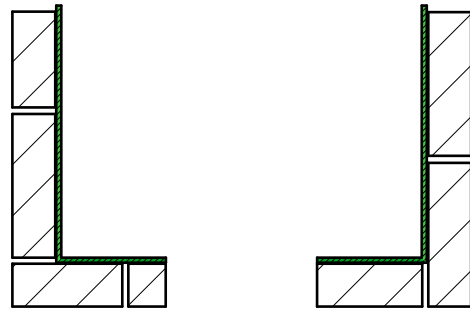


VARAAVA TAKKA 900

K 9,11,13



K 10,12

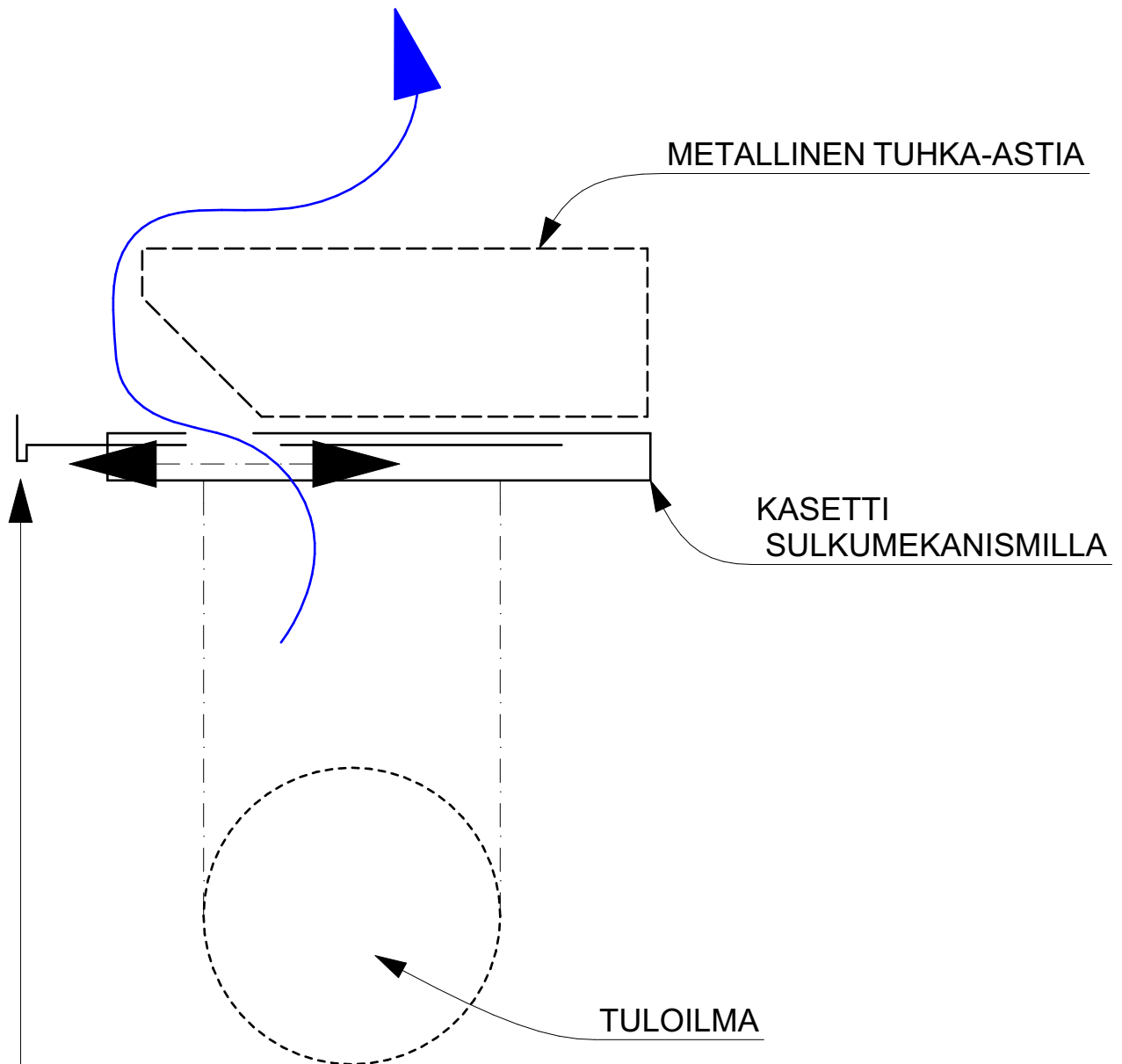


VARAAVA TAKKA 900

VARAAVA TAKKA 1060 TARVIKELUETTELO		
Tarvikkeen ID	Määrä	H U O M
ARINA 1B(T)	1	Arina 1B tai vastaava
Aukko	1	REIKÄ
Aukko	4	
MRT60	177	ML5 kpl*1,0 kg
MTT257	4	
MTT257	38	Tulenkestävä ML kpl* 0,3 kg
NUOHOUS (T)	2	130x130 Nuohousluukku
NUOHUSHOLKKI (T)	2	Vastaava muurausholkki
PAL 20	1	1m2
PT257	60	Savilaasti kpl *1,0 kg
Täyte	1	-
TUHKALAATIKKO(T)	1	Tuhkapesän ovi tai laatikon etulevy
TUHKALAATIKON HOLKKI (T)	1	Muurausholkki
TUL 10	1	
TUL 10	11	TUL 10 tulisijaeriste ~6m2
UT257	3	
UT257	137	Savilaasti kpl *1,0 kg
V1	1	V1-> Valumassa 100 kg
V2	1	
V3	2	
V4	1	
V5	1	

VARAAVA TAKKA 900

ILMANOTON OHJAUKSEN PERIAATEKUVA



Peitekasetissa esim. eteen/taakse
liuúttavissa ja suljettavissa
oleva sulkumekanismi